

Study visit in Tampere – Lessons learnt

Gabriel Mustăța

Technical Director / Head of Food Packaging Laboratory,
National R&D Institute for Food Bioresources - IBA Bucharest





Content:

- Who we are?
- RMA in Romania ?!
- Study visit in Tampere
- Conclusions and remarks

Who we are?

IBA Bucharest is the only national R&D institute in the **food sector** and is evolving into an industry-oriented organization. It seeks public or private competitive funding to implement projects aimed at creating products or technologies, developing laboratory analytical methods, and preparing studies or strategies.



www.bioresurse.ro



IBA Bucharest is a public research organization under the coordination of the Ministry of Research, Innovation and Digitization, with activity in four strategic areas:



FOOD SAFETY



NUTRITION



CONSUMER SCIENCES



(BIO)TECHNOLOGIES

9
research
laboratories



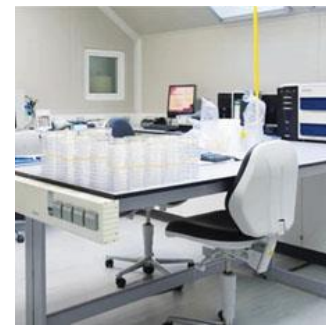
Food chemistry



Molecular biology



Food packaging



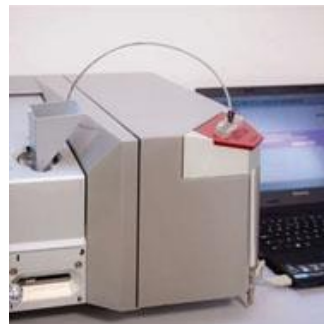
Microbiology



Nutrition



Chromatography



Reference materials



NMR



Consumer Sciences

R&I in Romania



R&I Intensity [↗](#)
0,5% 2,3%
EU average

R&I Intensity Ranking [↗](#)
28 out of 28
among EU

Private R&I Intensity [↗](#)
0,3% 0,2%
Public

*Total intramural R&D expenditure
(GERD) as percentage of GDP*

*Total intramural R&D expenditure
(GERD) as percentage of GDP*

*Intramural R&D expenditure (GERD)
as percentage of GDP between Private*

DESI [↗](#)
7,65 28 out of 28
among EU

Ease of Doing Business Rank [↗](#)
52 out of 190

Researchers ratio [↗](#)
1.004 28 out of 28
among EU



*The Digital Economy and Society
Overall Index is a composite index on*

*World Bank index ranking the country
on the ease of doing business*

*Number and ranking of a country
based on the number of researchers*



Patent applications rate [↗](#)
1,0 3,3
EU average

Top cited publications rate [↗](#)
4,9% 11,1%
EU average

Knowledge-intensive employm...
26,5% 36,5%
EU average

*Patent applications per billion GDP in
current Purchasing Power Standards*

*Percentage of scientific publications
within the 10% most cited scientific*

*Percentage of employment in
Knowledge Intensive activities*



RMA in Romania ?!

RMA is not yet recognized in Romania, leading to significant administrative burdens on researchers.

Most researchers identify strongly with their discipline but not with managerial roles, seeing RMA tasks as burdensome.

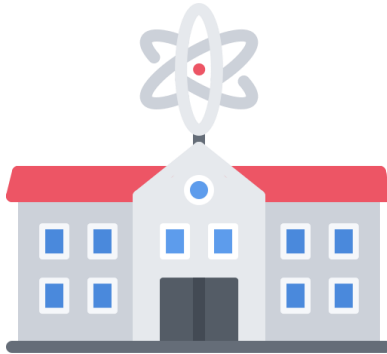
Policy changes are needed to establish RMA as a profession and integrate it into research projects to enhance the research environment.

Romanian research environment

Academia-centered system



university



research institute



Private sector

Study visit

WIDERA-NCP Study Visit, Tampere University 14th -16th of May 2024



Tampere
(Finland)



City of Tampere





Study visit Agenda

Tuesday 14.05.2024 Theme of the day – Research leadership, Networking and lobbying in Research Management

Wednesday 15.05.2024 Theme of the day – Research services

Thursday 16.05.2024 Theme of the day – Impact of Research

Where I see my MAIN role in my current job ?





LESSONS LEARNT

☐ Increase researchers time to do research

i.e.: Streamline administrative processes, delegate non-research tasks to support staff, and implement digital tools to reduce time spent on grant management and reporting.

☐ Increase external funding for research

i.e.: Identify new funding opportunities, develop grant-writing support services, and foster partnerships to improve success rates in securing competitive grants.

☐ Ensure compliance

i.e.: Establish clear protocols for legal, financial, and ethical compliance.

☐ Increase impact of research

i.e.: Promote knowledge transfer, facilitate public engagement, and enhance collaborations between academia and industry to ensure research leads to societal/industrial applications and increases visibility.

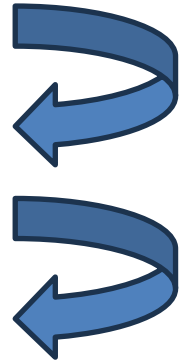


LESSONS LEARNT

Identify **researchers** with potential and motivation to win competitive grants

Identify researchers with experiences as evaluators

Talk to the NCP to get researchers in the evaluators loop





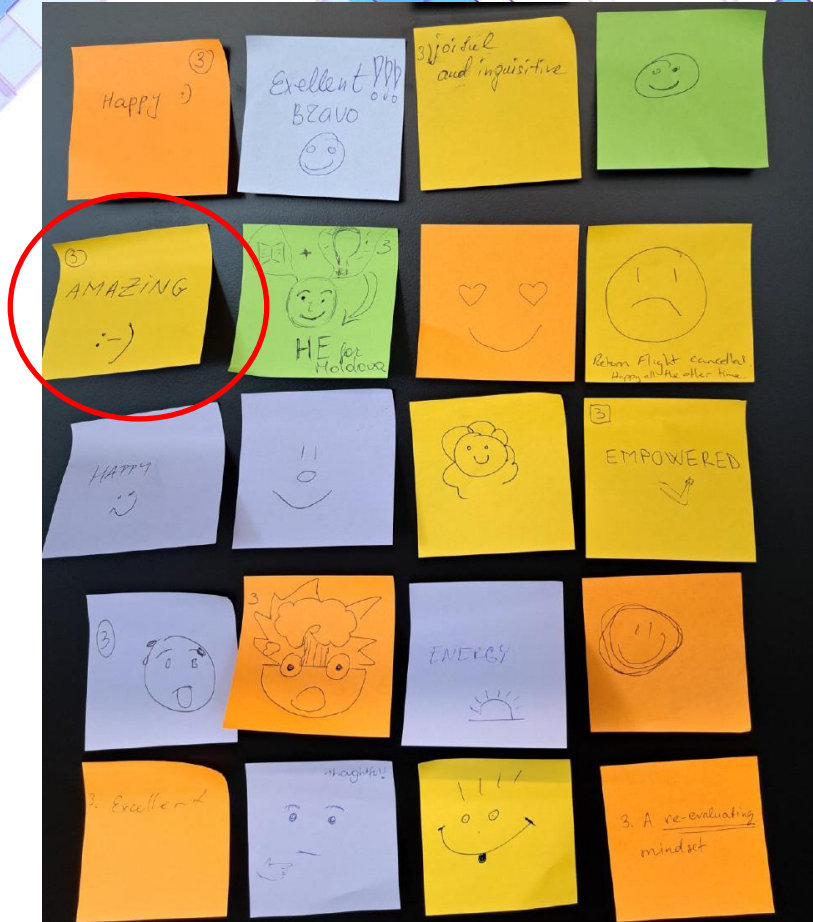
LESSONS LEARNT

Upskill administrative staff, especially in Finance Department.

Establish processes to gain better oversight of workload ahead of time.

Terminate processes, activities not adding value





**Last moments of the
study visit**

**A word or emoji describing your
current feeling**



Conclusion

The role of RMAs is crucial in ensuring the efficient administration of research, enabling researchers to focus more on their scientific work while complying with institutional, national, and international requirements.



"IBA Support" Managerial Center

IBASupport

Thank You



For Keeping Our Research Running Smoothly

gabi.mustatea@bioresurse.ro

+40 762675684