

ERA in Horizon Europe



ERA in Horizon Europe

Horizon Europe, the EU's funding programme for research and innovation, contributes to achieving the European Research Area (ERA). Strengthening the ERA is not only a general objective of Horizon Europe but is also supported by a dedicated programme part '**Widening Participation and Strengthening the ERA**' (**WIDERA**), with the following components:



widening participation and spreading excellence



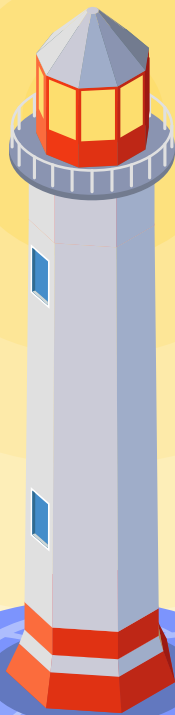
reforming and enhancing the European R&I System

The budget for this programme part is about **€3.2 billion for 2021-2027**.

The component 'Reforming and enhancing the European R&I System' is specifically designed to support the implementation of the four priority areas of the Pact for Research and Innovation and the ERA Policy Agendas. The first [ERA Policy Agenda 2023-2024](#) and the second [ERA Policy Agenda 2025-2027](#) will continue to shape the WIDERA work programmes.

This tool is designed as a one stop shop where you can explore the ERA, navigating the Pact for Research and Innovation in Europe, ERA Policy Agendas, priorities, actions, structural policies, WIDERA Work Programmes and Horizon Europe projects.

For current funding opportunities in WIDERA, please visit the [Funding and Tenders Portal](#).



ERA Policy Priorities: ERA Actions and Structural Policies

Open science

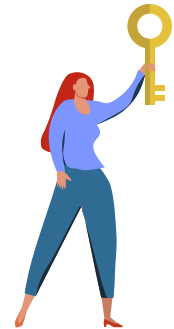
Scientific discovery and research impact are highly dependent on the open sharing of scientific data and research outputs. However, a significant portion of scientific data is not shared openly, not stored in a trusted and sustainable repository, poorly annotated, or not formatted in a standardised way that allows for machine-readability.

Research infrastructures

Research infrastructures are facilities that provide resources and services for research communities to conduct research and foster innovation in their fields. They are crucial enablers of research and innovation and drivers of multidisciplinary and data-intensive science.

Gender equality

Gender equality has been a priority of the European Research Area (ERA) since 2012. Since 2020, the ERA has opened to inclusive gender equality, addressing multiple forms of discrimination, including the intersection of gender and other grounds of discrimination, and promoting sectoral and geographical inclusiveness.



Research careers

Research careers are at the heart of the European Research Area. It is thanks to our research talents that research and innovation can address societal needs and ensure competitiveness of Europe on the global arena.



Research assessment

The current assessment systems of researchers, research projects, research units and research institutions are still very much based on a limited set of research outputs and activities, mainly publications, and dominated by some inappropriate uses of a number of indicators and methods gauging the quality, performance and impact of research.

Knowledge valorisation

Knowledge valorisation is the process of creating social and economic value from knowledge by linking different areas and sectors and transforming data, know-how and research results into sustainable products, services, solutions and knowledge-based policies that benefit society.



Global Approach to RI

There is a need for a more comprehensive, effective and coordinated approach to the engagement with EU partner countries and regions in R&I cooperation to avoid duplication and to have more impact to face global challenges and to protect the Union's strategic interests, values and principles in the current challenging geopolitical context.

SET Plan

Launched in 2007 as a first step to establish a research and innovation-driven energy technology policy for Europe, the SET Plan is a long-term structure to create synergies and improve coordination between national and European energy research policies.



Higher education

The Pact for Research & Innovation (R&I) sets the development and exploitation of synergies between the ERA and the European Higher Education Area as one of the priority areas for joint action in the EU.

Access to excellence

Widening policy aims to bridge the research and innovation (R&I) gap in Europe and strengthen the European Research Area (ERA) by addressing lower research and innovation performance.

Citizen engagement

Citizen engagement is about the co-design of research agenda, co-creation of research contents and co-assessment of research and innovation (R&I) outcomes with citizen and civil society.

Science for policy

The European Commission plays a central role in strengthening the Science for Policy (S4P) ecosystem across Europe. Its efforts aim to ensure that scientific knowledge is effectively used in policymaking at all levels – European, national, regional, and local, as well as at wider international level.

AI in science

Science increasingly relies on Artificial Intelligence (AI) to progress and innovate. AI is transforming the scientific landscape across every stage of research, assisting scientists, processing large-scale data, making predictions, automating tasks.



Industrial transformation

To boost private sector investment in research and innovation, a clear and structured approach that reflects industry needs and supports the practical use of research results in real-world industrial applications is needed. Therefore, this ERA action aims to develop and test a systematic tool box for assessing industrial needs for, among other things, industry engagement in research infrastructures, developing investment agendas and deployment of advanced, sustainable technologies.

New approach methodologies NAMs

New Approach Methodologies (NAMs) hold the potential to deliver human-relevant, accurate, reproducible and sustainable innovations in biomedical research, which may directly or indirectly reduce the reliance on animal testing.



Ethics and integrity

Research ethics and integrity are the foundation of scientific excellence and public trust in science. The EU is committed to protecting and promoting fundamental rights, values and principles, both at home and through international cooperation in research and innovation.

Research management

Research management is a multifaceted field that is essential for building strategic capacity of research performing and funding organisations, thereby supporting the advancement of the European Research Area.

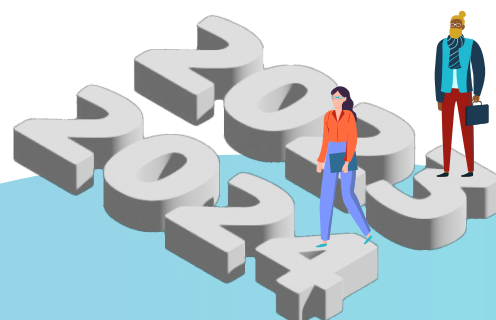
Horizon Europe WIDERA Work Programme 2021-2022

	2021	2022
<u>Open science</u>	<p><u>Capacity building for institutional open access publishing</u></p> <p><u>Global Cooperation on FAIR</u></p> <p><u>Impacts of open science practice</u></p>	<p><u>Training on open and responsible R&I</u></p> <p><u>Policies for open access books and monographs</u></p> <p><u>Reproducibility of scientific results</u></p> <p><u>Institutional and territorial changes toward open and responsible R&I</u></p>
<u>Gender equality</u>	<p><u>Centre of Excellence on Inclusive Gender Equality</u></p>	<p><u>Gender and social, economic and cultural empowerment</u></p> <p><u>Implementation of gender equality plans</u></p> <p><u>Living lab for gender responsive innovation</u></p>
<u>Research careers</u>		<p><u>ERA Talent pipeline</u></p> <p><u>ERA Fellowships</u></p> <p><u>ERA talent pipeline</u></p> <p><u>ERA Talents</u></p>
<u>Research assessment</u>	<p><u>Assesment of research and researchers</u></p>	<p><u>ERA talent pipeline</u></p>
<u>Knowledge valorisation</u>	<p><u>Standardisation Booster</u></p>	
<u>Global Approach to RI</u>	<p><u>Global Cooperation on Fair Data</u></p>	
<u>SET Plan</u>	<p><u>Strenghtening SSH research communities</u></p>	
<u>Higher education</u>	<p><u>European Excellence Initiative</u></p>	<p><u>Acceleration services for Higher Education Institutions</u></p>
<u>Citizen engagement</u>	<p><u>Societal trust in science, research and innovation</u></p> <p><u>STE(A)M roadmap for Science Education</u></p> <p><u>Capacity-building and brokering for citizen science</u></p> <p><u>Supporting citizen science</u></p>	<p><u>Training for open and responsible R&I</u></p> <p><u>Institutional and territorial changes for open and responsible R&I</u></p> <p><u>Open schooling for science education</u></p> <p><u>Comptenence centre for science communication</u></p>
<u>Ethics and integrity</u>	<p><u>Challenges of ethics and integrity in response to Covid-19 pandemic</u></p> <p><u>Ethics expertise for new technologie</u></p>	<p><u>Empirical and behavioural approach to ethics and integrity</u></p>
<u>Research management</u>	<p><u>Training and networking scheme for research managers</u></p>	



Horizon Europe WIDERA Work Programme 2023-2024

	2023	2024
Open science		Reproducibility of scientific results Capacity building on IP management Not-for-profit open access publishing
Gender equality	EU Manifesto for STE(A)M education Zero tolerance approach to gender-based violence	Implementation of gender equality plans Policy coordination for gender equality plans and policies
Research careers	ERA Fellowships	Talent Ecosystems European Competency Framework for researchers ERA Talents ERA Fellowships
Research assessment	Reforms of research assessment	
Knowledge valorisation	Experimentation and exchange for value creation	Experimentation and exchange for value creation
Global Approach to RI	European Info Platform on China	Global Cooperation in not-for-profit Open Access
Higher education	European Excellence Initiative	
Access to excellence	Teaming for Excellence Twinning Bottom-up Twinning Green Deal European Excellence Initiative Pathway to synergies Dissemination and Exploitation Support Facility Hop On Facility Excellence Hubs ERA Chairs ERA Fellowships	ERA Talents COST
Citizen engagement	Citizen Science Campaigns	Science comes to town
Ethics and integrity	Ethics for environmental & climate technologies Future of research ethics review	Next generation AI and human behaviour
Research management		Professionalisation of research management



Horizon Europe WIDERA Work Programme 2025

2025

<u>Open science</u>	<u>Institutional non-profit open access publishing</u> <u>Rolling out the ERA Policy Agenda results</u>
<u>Gender equality</u>	<u>Career barriers faced by underrepresented and marginalised researchers</u>
<u>Research careers</u>	<u>Rolling out the ERA Policy Agenda results</u>
<u>Research assessment</u>	<u>Rolling out the ERA Policy Agenda results</u> <u>Reforms of research assessment</u>
<u>Knowledge valorisation</u>	<u>Rolling out the ERA Policy Agenda results</u>
<u>Higher education</u>	<u>European Excellence Initiative</u>
<u>Access to excellence</u>	<u>ERA Fellowships</u> <u>Plans for connected regional innovation valleys in widening countries</u> <u>R&I policymaking in the EU enlargement countries</u> <u>Hop On Facility</u> <u>EIC Pre Accelerator</u> <u>European Excellence Initiative</u>
<u>Citizen engagement</u>	<u>Science comes to town</u>
<u>Science for policy</u>	<u>Science for Policy ecosystem</u>
<u>Research management</u>	<u>Rolling out the ERA Policy Agenda results</u>



Horizon Europe WIDERA Work Programme 2026-2027

	2026	2027
Open science	Strengthening ecosystems for ERA Advancing knowledge for ERA Open access and research assessment reforms Institutional capacities for ERA Non-profit open access publishing Academic intellectual assets	
Gender equality	Advancing Knowledge for ERA Building institutional capacities for ERA	
Research careers	Advancing Knowledge of ERA ERA Fellowships	Talent Ecosystems ERA Fellowships
Research assessment	Open access and research assessment reforms	
Knowledge valorisation	Strengthening ERA ecosystems Piloting innovative approaches to support academic startups and spinoffs European Citizens' Hackathon Championship	
Global Approach to RI	Strengthening ERA ecosystems	Upgrading EU's independent knowledge on China's STI
SET Plan		SET Plan renewable fuel SET Plan wave and tidal energy systems
Higher education	Strengthening the role of Technology Transfer Offices	Excellence Hubs
Access to excellence	Teaming Synergies Twinning Hop On Facility ERA Fellowships Research Management Facility Programme HORIZON CORDIS European Commission	EIC Pre Accelerator ERA Chairs ERA Fellowships Excellence Hubs ERA Research Managers Programme HORIZON CORDIS European Commission
Citizen engagement	Citizen engagement for responsible and democratic R&I Science comes to town	Science comes to town Public engagement in R&I and scientific literacy
Ethics and integrity	Building institutional capacities for ERA Strengthening ERA ecosystems Advancing knowledge for ERA	
Research management	Research Management Facility	ERA Research Managers



